

# Wetrok Wetcovac

Operating instructions

(Translation of original manual)



## Dear Customer

Thank you for choosing a high-quality Wetrok product.  
In doing so, you have purchased a quality machine that will give you professional results for many years with the right care and correct use.

We wish you a lot of enjoyment using your new Wetrok!

The Wetrok product management.

## General



- Carefully read these operating instructions before commissioning. Always keep it within easy reach!
- These operating instructions provide all information necessary for operation, maintenance and care. It is integrated part of the machine and must be passed on to an eventual newowner.



- Wetrok supplies it's customers with this booklet on the internet under: [techinfo.wetrok.com](http://techinfo.wetrok.com)

## Table of Contents

.....	2	CE .....	19
Dear Customer .....	2		
General .....	2		
Table of Contents .....	3		
Symbols .....	4		
Intended Use .....	5		
Emergency .....	5		
Guarantee provisions .....	6		
Safety .....	6		
Scope of delivery .....	7		
Copyright .....	7		
Machine overview .....	8		
Accessories .....	8		
Consumables .....	9		
Before commissioning / Initial commissioning .....	9		
Operation .....	10		
Commissioning .....	11		
Maintenance and repair .....	12		
Troubleshooting .....	16		
Technical specifications .....	17		
Disposal .....	18		
Transport, storage .....	18		

## Symbols



### DANGER

For an immediate threat that could lead to severe bodily injury or death.



### WARNING

For a possible threat that could lead to severe bodily injury or death.



### ATTENTION

For a possibly dangerous situation that can lead to damages.



For use or operation instructions and other useful information, but it is not for dangerous or harmful situations.



Check



No household refuse. Dispose of in accordance with applicable laws and regulations.



Do not use any foaming cleaning agents



In compliance with the European directives for safety and EMC.



Permissible incline



Voltage



IP protection class

## Intended Use

This machine is designed for industrial floor cleaning of hard floor coverings in interior areas in due consideration of this operating manual and the specifications given by the manufacturer of the hard floor covering.

Observance of all information in these operating instructions also pertain to the intended use.

Any use of the machine, not mentioned under «intended use» is not allowed.

Any kind of claims arising from damage resulting from improper use are excluded.

## Emergency

### In the case of an emergency

- Switch off the machine, if available press the emergency stop switch.
- Alert for further assistance
- Immediately apply recognised first-aid measures



### DANGER

for personal injury and damage to the machine

- Suction or disposal of hazardous dust and inflammable material is prohibited.
- Vacuum cleaning of flammable, toxic, corrosive, irritating, radioactive materials or materials harmful to health is prohibited.
- Cleaning floors near highly inflammable or explosive substances is prohibited.



### WARNING

Do not put the machine back into operation before inspection by Wetrok or a Wetrok contracting partner after any incidents.

## Guarantee provisions

- The guarantee provisions are found in the General Terms and conditions of the contractual partner.
- Where damage occurs because of disregarding these instructions as well as improper treatment or using machine other than for its intended purpose, claims under the warranty will be void. No liability will be accepted for consequential damage arising therefrom.
- Damage resulting from natural wear, overloading or improper handling are likewise not covered by the warranty.
- Complaints will only be acknowledged if the machine has been repaired each time by Wetrok or a Wetrok authorized partner.
- The warranty period is generally 2 years (except for rechargeable batteries and consumables).

## Safety

This machine is electrically tested and satisfies European Safety Standards. It is constructed according to the available scientific information and state-of-the art technology. It has various circuit breakers that act as protection systems. Dangers can occur in spite of this, in particular in the case of improper use or non-compliance with the specifications and instructions in these operating instructions.



### WARNING

#### Electric voltage / electric current

Contact with voltage or current bearing parts carries the risk of electric shock, which can result in serious injury or even death.

- Never touch damaged cables. Have a skilled person replace faulty cables immediately.
- Always switch off and disconnect the power supply before carrying out any work on the machine.

- This machine must not be used by persons (including children) with reduced physical, sensory or mental capabilities or lack of experience and knowledge. Children must be supervised to ensure that they do not play with the appliance. The cleaning and user maintenance may only be performed by trained and instructed personnel.
- Conversions and modifications to the machine are not permitted.
- Safety instructions for the use and the maintenance of the machine are listed in the corresponding chapters and must be strictly observed!
- Never use a defective machine.
- The machine may not be used as a towing vehicle, means of transport, or toy.
- The machine may not be used for cleaning textile floor coverings.
- The machine must not pick up any liquids. They may damage the machine.
- The machine must not vacuum up any materials (glass splinters, metals, etc.). These may damage the filter elements.
- The machine shall only be put into operation if the voltage stated on the nameplate (voltage  $\pm$  5%) agrees with the voltage available in the building.

## Responsibility of the operator:

The machine is designed for professional use. The operator of the machine is therefore subject to the statutory obligations for occupational health and safety. Besides the safety notices in these operating instructions, additionally, the national, and generally valid operation safety and accident prevention are binding.

In this the following applies in particular:


- The machine is only used by personnel instructed in its handling and authorized to use it.
- The operator must ensure that the user wears sturdy footwear to prevent injury.
- The operator must ensure that the recognized occupational safety regulations and all other legal or company internal provisions are observed.
- The operator must ensure that all users are acquainted with the safety regulations and trained in the use of the specific machine.
- The operator must ensure that responsibilities for the operation, maintenance and repair of the machine are clearly assigned and observed.
- The operator must ensure that all users have read and understood the operating instructions before using the machine.

Furthermore the operator must ensure that the machine is in perfect technical condition.

Therefore following applies:

- It is the responsibility of the operator to ensure that the maintenance intervals described in these operating instructions are observed.
- The operator must ensure that all safety devices are controlled on function and completeness on a regular bases.
- Faults and damage must be immediately notified to the Wetrok Service Agent.
- Protective guards must not be dismantled nor bypassed.

## Responsibility of the user:

- The machine may only be used by personnel who have been instructed in its handling and authorized to use it.
- When leaving the machine, the machine must be secured against unintended motion, and the  switch must be switched off. If available, the mains connection must be unplugged.

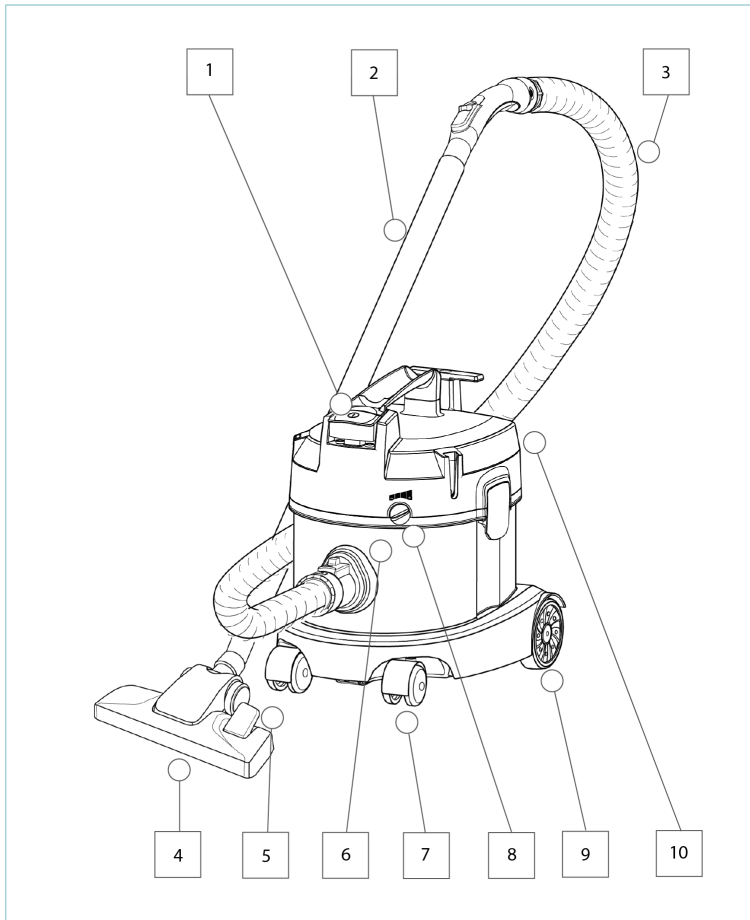
## Scope of delivery

Machine, suction nozzle, brush housing, charging cable, Care Card, Quick Guide and complete operating instructions (download).

## Copyright

This set of operating instructions is property of Wetrok AG as concerns copyright. It is only entrusted to buyers of this machine. All rights, particularly the right to reproduce or translate, belong to Wetrok AG. Violation obligates compensation for damages. We reserve all other statutory claims. The language of the original edition of these instructions is German.

## Machine overview



1. Machine ON/OFF
2. Suction tubes
3. Suction hose
4. Floor nozzle
5. Hard/Carpet button
6. Suction hose connection
7. Wheel
8. Suction power button
9. Rear wheel
10. Device head

## Accessories

Find more information on our products and product range at: [www.wetrok.com](http://www.wetrok.com)

## Consumables

Wetcovac		PU
41700	Energy combination nozzle 28, Ø32	1 piece
41701	Hard-floor nozzle 30, Ø32	1 piece
42650	Fleece bag Wetcovac 7 litres/HEPA 13	10 piece
42170	2in1 joint nozzle with brush ring Ø32	1 piece
41710	Suction hose Wetcovac Ø32	1 piece
41711	Hand tube (2-part)	1 piece

## Before commissioning / Initial commissioning



### SAFETY

Delivery, or instructions on safety regulations, handling and maintenance, in addition to initial commissioning, are normally undertaken by an approved expert. Where this is not the case, the operator is responsible for instructing the users.

Items of jewellery, such as rings and chains, must be removed.



Wear gloves



Wear robust shoes or boots



Wear protective goggles

## Operation



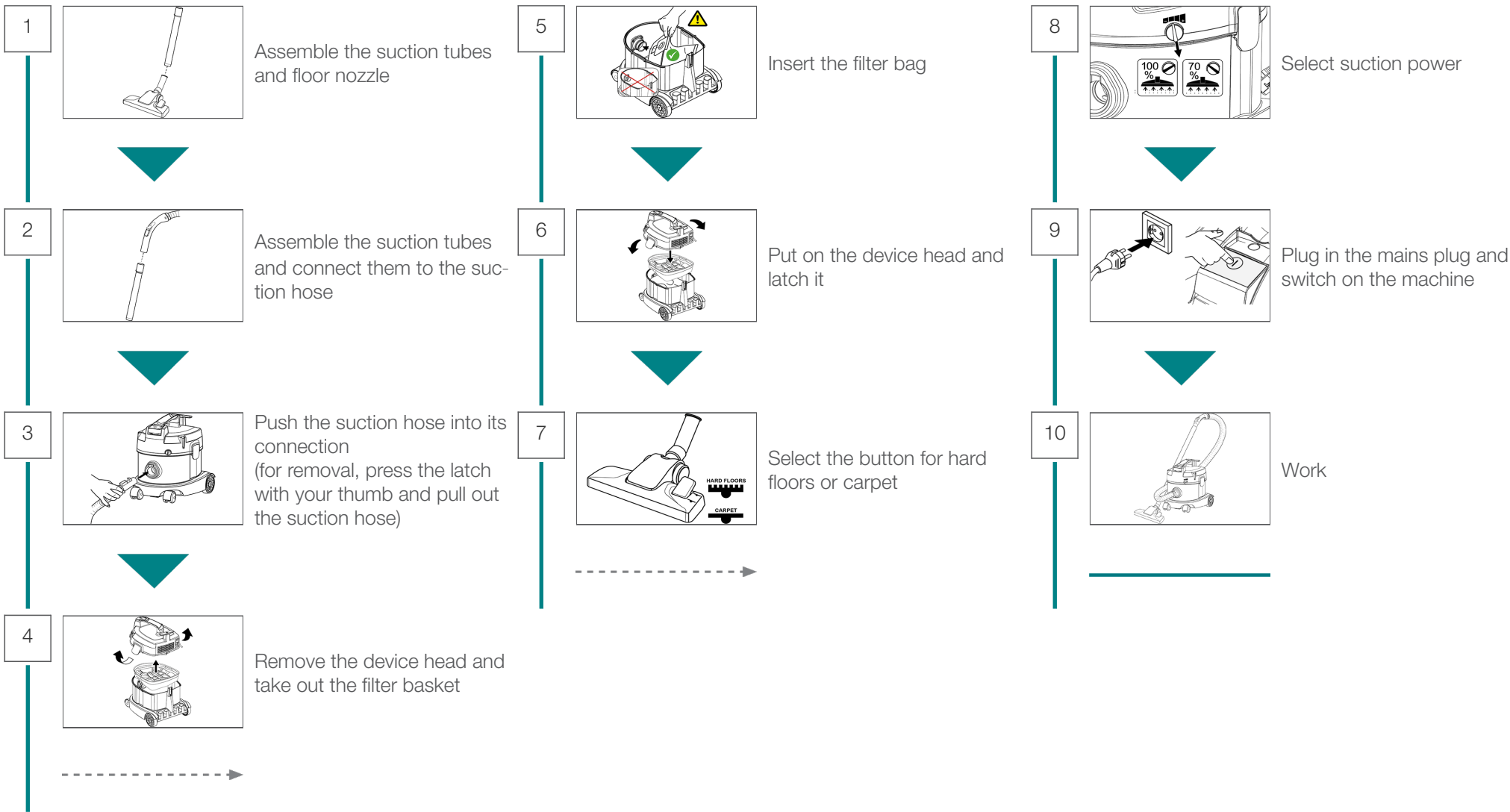
### SAFETY

- When machine is stopped, the brush set must be switched off immediately by releasing the grip sensor to prevent any damage to floor coverings.
- The mains connection may not be squeezed or damaged! Only a skilled person may replace the mains connection!
- Before starting maintenance work or cleaning, switch off the machine and secure against unvoluntary switching on.

When leaving the machine, the machine must be secured against unintended motion, and the  switch must be switched off. If available, the mains connection must be unplugged.

- Turn off the machine and disconnect from the mains before changing the brushes and Pad-drive pulleys / pad.
- The machine was tested with Wetrok cleaning agents. Only use Wetrok cleaning agents to ensure working without problems.
- When using cleaning and care products, observe the producer's hazard warnings. We recommend to always wear protective goggles, protective clothing and safety shoes.
- Do not allow machine to come into contact with items of clothing, jewellery or hair.
- The drive motion and the vicinity of rotating brushes/pads pose a risk of injury.
- Use only original Wetrok accessories and consumables.
- If you are handling the machine near cables, motors or parts that have been moved, the machine must be turned off.
- Avoid that cables, ropes or similar objects that are lying around are picked up and reeled in by the running brush unit.
- Before scrubbing, clean the floor of loose dirt.

# Commissioning



## Maintenance and repair



### SAFETY

- Before starting maintenance work or cleaning, switch off the machine and secure against involuntary switching on.
- If available, the mains connection must be unplugged.
- Do not clean the machine with high pressure or steam or strong liquid jet. Prevent direct contact with water.
- Use only original Wetrok spare parts for repairs.
- Examine mains connection cable for signs of damage or aging.

Our products have been inspected for safety at the factory. To ensure their operational safety and to maintain their value, a service must be carried out once every twelve months or after 500 hours of operation. Service may only be performed by Wetrok or by Wetrok authorized specialists. For maintenance work, replacing parts etc., the mains plug must always be unplugged.

- Contact your Wetrok authorized agent for reordering.

## After operation



### WARNING

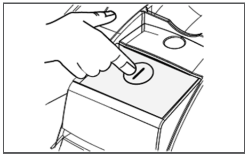
If the machine is tilted there is an increased danger of injury!



### ATTENTION

Do not clean the machine with high pressure or steam or strong liquid jet. Prevent direct contact with water.

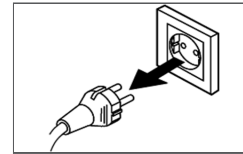
1



Switch off machine



2



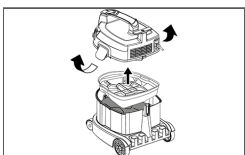
Remove the mains plug



## Change filter bag



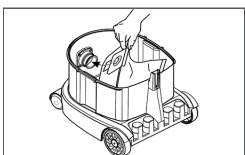
1



Remove the device head and take out the filter basket



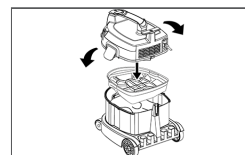
2



Pull out the filter bag and insert a new one

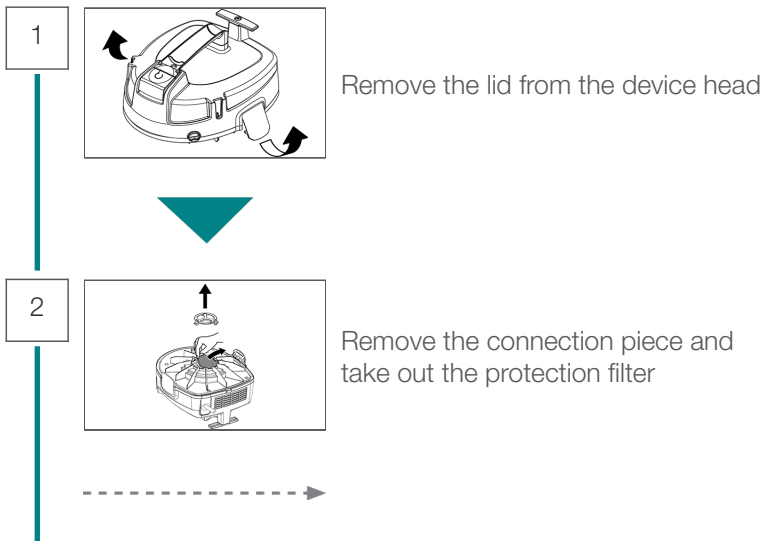


3



Put on the device head and latch it

# Replace the protective filter



## Troubleshooting

Fault	Cause	Solution
Less suction power, machine turns off	Filter bag full?	Replace filter bag, see maintenance
	Suction pipe, suction hose or nozzle obstructed?	Clear the suction tube, suction hose, or nozzle of dirt
	Pre-filter clogged with dust?	Clean inlet filter, see maintenance
	Exhaust filter obstructed?	Clean exhaust filter, see maintenance
	Secondary air valve open at handle?	Close secondary air valve at handle
Machine stops unexpected	Motor shut off by thermal overload switch?	The suction motor is provided with a thermal overload switch. This shuts off the motor automatically if it overheats. After cooling off (may last up to 30 minutes), the motor starts up again.



For all other faults and damages please contact Wetrok or Wetrok authorised specialists.

## Technical specifications

Technical specifications		
Nominal voltage	220 - 240 50 /60	VAC Hz
Power	700	W
Sound pressure level (LpA)	60	dB(A)
Vibration	2.5	m/s <sup>2</sup>
Vacuum	210	mbar
Tank	11	l
Cable length	10	m
Weight	4.2	kg
Max. dimensions (LxWxH)	285x350x 388	mm

Technical specifications		
Filter bag	7	l
Certification mark	✓	CE
Class	II	



We reserve the right at any time to make technical modifications to the machine as well as to consumables and accessories. For this reason, the machine may differ in details from the information in the operating instructions.

## Disposal

- Packaging and cleaning agents must be disposed of according to national laws and provisions.
- Machine must be disposed of according to national laws and provisions.

## Transport, storage



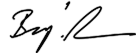
Temperature must not be below 5 °C nor exceed 40°C when transporting and storing machine.



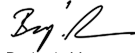
The machine may only be stored indoors.

When machine is transported, it must be properly packed and secured.

If the machine is stored, the fresh water and dirty water must be emptied and the tanks must be cleaned and kept opened.

CE

	<b>KONFORMITÄTSEKLRÄRUNG DÉCLARATION DE CONFORMITÉ</b>	
<b>Wir</b> <b>Nous</b>	<i>Wetrok AG, Steinackerstrasse 62, CH – 8302 Kloten</i>	
<small>(Name &amp; Anschrift des Anbieters / nom du fournisseur et adresse)</small>		
<b>erklären in alleiniger Verantwortung, dass das Produkt</b> <b>déclarons sous notre seule responsabilité que le produit</b>	<i>Trockensauger</i> <i>Aspirateurs à sec</i>	
<b>Wetcovac</b>		
<small>(Art der Maschine / Type de machine)</small>		
<b>40780 – 40789</b>		
<small>(Modell - Seriennummer; Baujahr / modèle - no de série; année de production)</small>		
<b>auf das sich diese Erklärung bezieht, mit den folgenden Normen übereinstimmt,</b> <b>auquel se réfère cette déclaration est conforme à aux normes suivants,</b>		
<i>EN 60335-1:2012; EN 60335-2-69:2012; EN 62233:2008; EN 55014-1:2017; EN 55014-2:2015; EN 61000-3-2:2014; EN 61000-3-3:2013</i>		
<small>(Titel und/oder Nummer sowie Ausgabedatum der Norm(en) oder der anderen normativen Dokument(e) (Titre et/ou no. et date de publication de la (des) norme(s) ou autre(s) document(s) normatif(s))</small>		
<b>gemäss den Bestimmungen der Richtlinien:</b> <b>conformément aux exigences des directives:</b>	<i>2006/42/EG</i> <i>2009/125/EG</i> <i>2014/30/EU</i>	
<b>Verantwortlich für die technische Dokumentation ist:</b> <b>Responsable pour le documentation technique est:</b>	<i>Marcel Rauschenberger</i> <i>Head R&amp;D Machine</i> <i>Wetrok AG</i>	
<i>Kloten, 14.03.2025</i>		
		
		<i>Benjamin Merz</i> <i>CEO</i> <i>Wetrok AG</i>
<small>(Ort und Datum der Ausstellung) (Lieu et date)</small>	<small>(Name und Unterschrift oder gleichwertige Kennzeichnung des Befugten) (nom et signature du signataire autorisé)</small>	

	<b>DICHIARAZIONE DI CONFORMITÀ DECLARATION OF CONFORMITY</b>	
<b>Noi</b> <b>We</b>	<i>Wetrok AG, Steinackerstrasse 62, CH – 8302 Kloten</i>	
<small>(nome e indirizzo del fornitore /supplier's name and address)</small>		
<b>dichiariamo sotto la nostra responsabilità, che il prodotto</b> <b>declare under our sole responsibility that the product</b>	<i>Aspirapolvere a secco</i> <i>Dry vacuum cleaner</i>	
<b>Wetcovac</b>		
<small>(modello della macchina / Type of machine)</small>		
<b>40780 – 40789</b>		
<small>(modello - numero di serie; anno di costruzione /model - serial number; year of production )</small>		
<b>cui si riferisce la presente dichiarazione, è conforme alle seguenti norme,</b> <b>to which this declaration relates is in conformity with the following standards,</b>		
<i>EN 60335-1:2012; EN 60335-2-69:2012; EN 62233:2008; EN 55014-1:2017; EN 55014-2:2015; EN 61000-3-2:2014; EN 61000-3-3:2013</i>		
<small>(titolo e/o numero, nonché data di pubblicazione della(e) norma(e) o degli altri documenti normativi) (Title and/or number and date of issue of the standard(s) or other normative document(s))</small>		
<b>secondo le disposizioni delle linee guida:</b> <b>following the provisions of directives:</b>	<i>2006/42/EG</i> <i>2009/125/EG</i> <i>2014/30/EU</i>	
<b>Il responsabile della documentazione tecnica è:</b> <b>Responsible for the technical documentation is:</b>	<i>Marcel Rauschenberger</i> <i>Head R&amp;D Machine</i> <i>Wetrok AG</i>	
<i>Kloten, 14.03.2025</i>		
		
		<i>Benjamin Merz</i> <i>CEO</i> <i>Wetrok AG</i>
<small>(luogo e data di emissione) (Place and Date of Issue)</small>	<small>(nome e firma o contrassegno equivalente della persona autorizzata) (name and signature or equivalent marking of authorized person)</small>	

© **Wetrok AG** Steinackerstrasse 62, CH-8302 Kloten  
Tel +41 43 255 51 51

**Wetrok Austria GmbH** Deutschstrasse 19, A-1230 Wien  
Tel 0800 20 48 68

**Wetrok GmbH** Maybachstrasse 35, D-51381 Leverkusen  
Tel +49 2171 398-0

**Wetrok Polska S.A.** ul. Łączyny 4, PL-02-820 Warszawa  
Tel +48 22 331 20 50

**Wetrok AB** Bergkällavägen 32, S-192 79 Sollentuna  
Tel +46 8 444 34 00

**[www.wetrok.com](http://www.wetrok.com)**